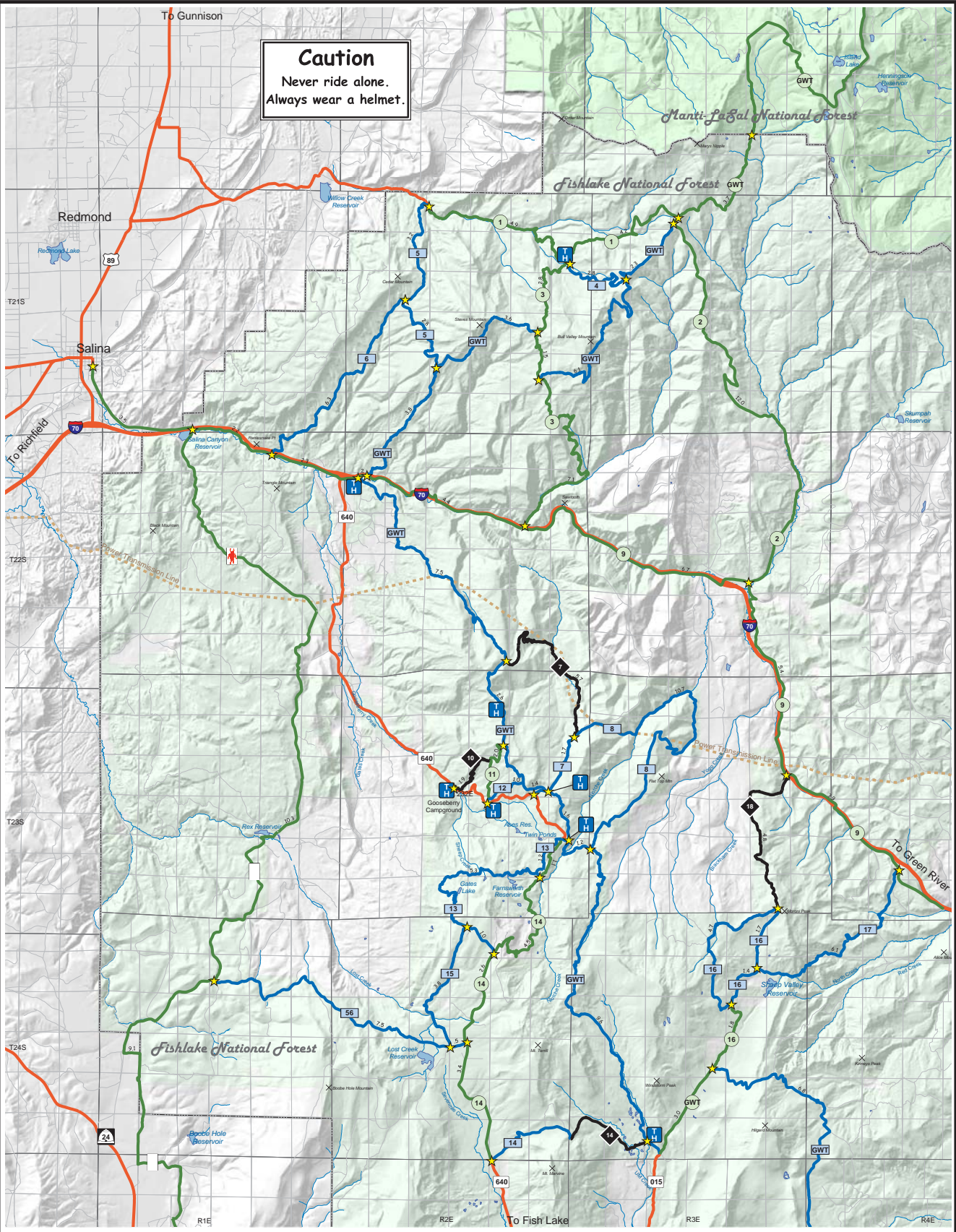


Caution
Never ride alone.
Always wear a helmet.



Legend

- ★ Intersections
- Difficulty**
- Easiest 1
- More Difficult 2
- Most Difficult 3
- Access Routes
- Ownership**
- Forest Service
- Private or Other

Gooseberry ATV Trails
Fishlake National Forest



Routes:		
GWT	Great Western Trail	55.6 Miles
Route 1	Willow Creek Road	9.2 Miles
Route 2	Salina Canyon Road	12.0 Miles
Route 3	Water Creek Road	9.9 Miles
Route 4	Little Redmond Trail	2.8 Miles
Route 5	Steves Pass Trail	6.0 Miles
Route 6	Steves Basin Trail	6.3 Miles
Route 7	Browns Hole Trail	7.5 Miles
Route 8	Flat Top Trail	10.6 Miles
Route 9	I-70 Frontage Road	25.3 Miles

Route 10	Squaw Hollow Trail	1.9 Miles
Route 11	Oak Ridge Road	2.0 Miles
Route 12	Gooseberry Mtn. Trail	1.0 Miles
Route 13	Gates-Farnsworth Trail	8.1 Miles
Route 14	UM Pass Trail/Sevenmile Road	17.1 Miles
Route 15	Humphrey Springs Trail	3.8 Miles
Route 16	Sheep Valley Loop	9.8 Miles
Route 17	Tommy Hollow Road	6.1 Miles
Route 18	Meadow Gulch Trail	4.8 Miles
Route 56	Lost Creek Road	7.9 Miles
Paute	Paute ATV Trail	**30.6 Miles

*Great Western Trail measured from Forest Boundary to south edge of map.
**Paute ATV Trail measured from Salina to south edge of map.

